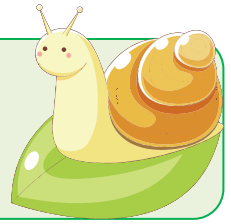


Read the passage taken from *The Snail and The Whale*. Pick out the rhyming pairs. Underline each pair with a different colour.

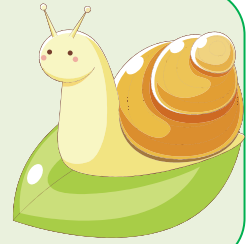


This is the whale that came one night
When the tide was high and the stars were bright.
A humpback whale, immensely long,
Who sang to the snail a wonderful song
Of shimmering ice and coral caves
And shooting stars and enormous waves.

And this is the tail of the humpback whale.

He held it out of the starlit sea
And said to the snail, “Come sail with me.”

Read the passage taken from *The Snail and The Whale*. Pick out the adjectives (describing words). Underline each adjective with a coloured pencil.



This is the sky

So vast and high,

Sometimes sunny and blue and warm,

Sometimes filled with a thunderstorm,

With zigzag lightening

Flashing and frightening

The tiny snail

On the tail of the whale.




Look at the picture on pages 8-9. Use some of the adjectives below to write a sentence to describe the picture.





icy	cold	brown	wintery
warm	blue	bleak	dry
sunny	red	summery	colourful
leafy	grey	slippery	shimmery



Teaching ideas

-  Look at the pictures on pages 8-9 (icebergs), 10-11 (fiery mountains and golden sands) and 16-17 (bear and eagle). Children discuss where in the world they think the snail and the whale are in each picture. Prompt the children to refer to clues in the pictures that helped the children to work this out.

-  Discuss the curly shape of the letters in the snail's messages on pages 5 and 23. Use a variety of different methods to practise their handwriting, such as using black sheets of paper and glitter glue, writing their names and words in sandboxes with their finger or writing on chalk boards

-  Use the book to look at the places where the snail and the whale visit. Have a look at some examples of postcards. Using books and/or computers, children research images of a place they would like to visit. Children then use these images to help create a scene for their postcard.