

HarperCollinsChildren'sBooks
presents

The world of David Walliams



Welcome to this spectacularly glorious pull-out from the world of David Walliams, bursting with fabulous fun facts, sneak peeks into his latest story adventures, activities, quizzes and loads of fun for all the family!

READ ALL ABOUT IT!

PUZZLE IT OUT!

THE NEWS

THE ICE MONSTER

FOUND IN ARCTIC

Heroes come in all different shapes and sizes in *The Ice Monster*, David Walliams' biggest and most epic adventure yet!



Having never been to school, Elsie couldn't read or write. However, the newspaper sellers would holler the headlines to passers-by.

Could this be true?
A real-life monster?
Ten thousand years old too?
Elsie was old enough to know that monsters weren't real, and young enough to believe that they might just be.

The girl had just swiped an apple off a market stall for her breakfast. Munching contentedly, she wove her way through the march of top-hatted gentlemen heading for work, until she reached the newspaper stand.

"Get lost, you little thief!" shouted the newspaper seller. He whacked the girl on the

back of her head with a rolled-up copy of *The Times*.

THWACK!

You got whacked by grown-ups every day if you were an urchin. You were the lowest of the low. At least it made a welcome change from being battered with a broomstick at **WORMLY HALL**.

"I only want to look!" pleaded Elsie.

"These papers is not for looking at. They is for buying. Now scram! Before I give you a kick where the sun don't shine!"

Not being a fan of a boot up the bottom, Elsie smiled at the man and ambled off down the street. She turned into an alleyway, then reached into the back of her grubby trousers and pulled out a copy of *The Times*. The girl had

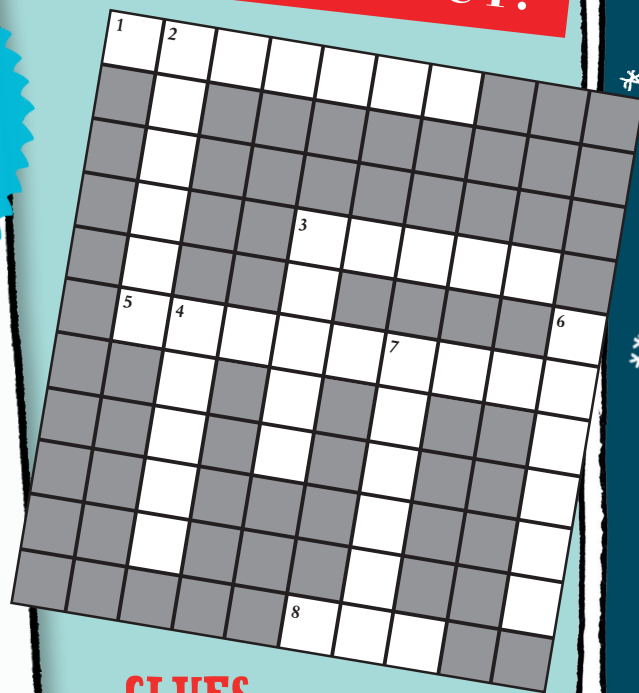
become an expert thief.

There were **big, bold black** letters on the front page. Elsie knew these spelled out words, but it all looked like a jumble to her. The picture underneath did speak to her, though. It was of a peculiar creature that looked like an elephant.

Once, she'd poked her head through the flap in a circus tent to get a free show, and seen an elephant performing tricks. However, *this* elephant was covered in thick hair, and its tusks were long and curved. It was encased in a huge block of ice, and a number of Arctic explorers were standing around it, looking proud. Despite the creature's bizarre appearance, Elsie found it hard to think of the poor thing as a monster. Monsters you were scared of. This animal you wanted to **hug**.

It looked a great deal smaller than the elephant she'd seen at the circus. Perhaps it was a baby. Despite having been dead for thousands of years, it still looked lost and alone.

"An orphan," whispered Elsie to herself. "Just like me."



CLUES

ACROSS

- The newspaper headlines refer to the woolly mammoth as a...? (7)
- Another name for a robber (5)
- People say you can "read all about it" in a... (9)
- Frozen water (3)

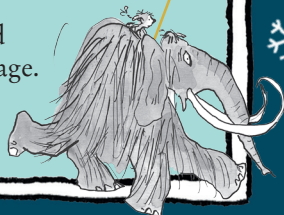
DOWN

- A child without parents (6)
- Elephants and woolly mammoths have these (5)
- The name of the main girl character in *The Ice Monster* (5)
- Poor child living on the streets of London (6)
- North Pole region (6)

Turn the page for more fun from

THE
ICE MONSTER

Find the crossword answers over the page.



THE ICE MONSTER

The year is 1899 and we're in Victorian London. *The Ice Monster* is the story of a ten-year-old orphan and a 10,000-year-old mammoth...



ELSIE'S LONDON QUIZ

MEET ELSIE...

Elsie is a homeless orphan, who lives on the streets of London.



DID YOU KNOW?
The Natural History Museum took seven years to build and opened in 1881!

- In the story, the Sticky Fingers Gang hide out in Big Ben, but where does the name "Big Ben" actually come from?
 - The tower
 - The bell
 - The person who built it
- The story is set in Victorian London. What was the name of Queen Victoria's husband?
 - Prince Albert
 - Lord Simon
 - Count Geoffrey
- As part of the adventure, Elsie sneaks into the Natural History Museum, but where in London is it?
 - Kensington
 - Essex
 - Westminster
- What are British Army veterans who live in the Royal Chelsea Hospital known as?
 - Silver Sergeants
 - Chelsea Pensioners
 - Royal Retirees
- Elsie's adventure takes her from London to the North Pole. How far is that to the nearest kilometre?
 - 4,288
 - 10,000
 - 8,752
- In the book, Elsie manages to charter HMS *Victory*. Who was that ship's most famous nautical owner?
 - Captain Jack
 - Admiral Nelson
 - Sir Frances Drake

ELSIE'S LONDON QUIZ: 1. b, 2. a, 3. a, 4. b, 5. a, 6. b

MAMMOTH QUIZ

MEET THE ICE MONSTER...

... a woolly mammoth that died ten thousand years ago. The lifeless animal was discovered by Arctic explorers, perfectly preserved in the ice. In 1899, it was brought to Victorian London...



DID YOU KNOW?
If you laid all the David Walliams books to end, the distance they cover would be further than travelling from London to the North Pole!

- How could you tell the age of a woolly mammoth?
 - By counting the rings on its tusks
 - By measuring the length of its tail
 - By counting its teeth
- A fully grown woolly mammoth weighed around six tonnes. How many Mini cars is that the same weight as?
 - 10
 - 5
 - 3
- What was the average lifespan of a woolly mammoth?
 - 100 years
 - 60 years
 - 30 years
- Woolly mammoths grew to 3 metres tall. How many people standing on top of each other would be roughly the same height?
 - 2
 - 5
 - 6
- Were woolly mammoths...
 - Herbivores (plant eaters)
 - Carnivores (meat eaters)
 - Pescatarians (plant and fish eaters)

DID YOU KNOW?
Victoria became queen when she was eighteen years old and reigned for sixty-four years!

MAMMOTH QUIZ: 1. a, 2. c, 3. b, 4. a, 5. a