

Synonyms and Antonyms

G Grammar

P Punctuation

S Spelling

Challenge 1

S 1 Draw a line to link each word with its synonym.

super

hard

difficult

amble

happy

fantastic

kind

large

walk

joyful

big

caring



6 marks

Marks..... /6

Challenge 2

S 1 Write the antonym to each word shown. Use each word in the box only once.

cold under noisy correct after far

- | | | | |
|----------|-------|-----------|-------|
| a) quiet | _____ | b) over | _____ |
| c) near | _____ | d) before | _____ |
| e) wrong | _____ | f) hot | _____ |

6 marks

2 Read each sentence and write the antonym of each word underlined.

- a) They washed in clean water. _____
- b) They could hear a loud noise in the house. _____
- c) The test was very difficult. _____

3 marks

Marks..... /9

Synonyms and Antonyms

Challenge 3

SG **1** Replace the words underlined in these sentences with a synonym from the words below so that each sentence makes sense.



alike

man

close

wrong

over

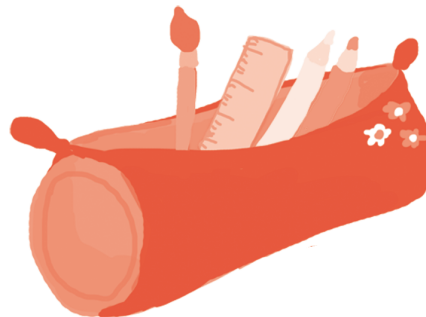
- a) The school day was finished. _____
- b) The young chap looked smart in his suit. _____
- c) Most of the answers were incorrect. _____
- d) They all looked similar in their school uniform. _____
- e) The shop was very near to their house. _____

5 marks

2 Complete the table to show the synonym and antonym for each word. The first line has been done for you.

Word	Synonym	Antonym
pretty	<i>beautiful</i>	<i>ugly</i>
rich		
young		
expensive		
stop		

10 marks



Marks..... /15

Total marks /30

How am I doing?

