

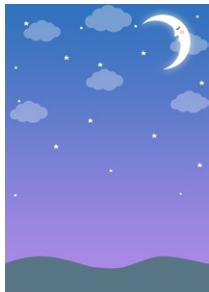
# Year 2 Autumn Term 2 SPaG Mat

1

**a**  
Add either ? for a questions of ! for an exclamation sentence.

What a great night to look at the stars

Where have all the stars gone



**b**  
Make longer words by adding the suffix -est or -er. Write the new word in full on the line.

dark \_\_\_\_\_

kind \_\_\_\_\_

**c**  
Which of these words means poorly?

- unwell
- untie
- unhappy

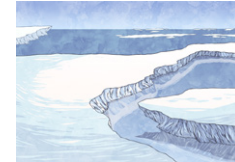


**d**  
Oops Mr Whoops has made TWO punctuation mistakes in his sentence. Can you underline the words that should start with a capital letter?

Next saturday, benji will be driving a campervan.



**e**  
List TWO adjectives to describe what you see in this picture.



\_\_\_\_\_  
\_\_\_\_\_

**f**  
Practise writing these common exception word spellings.

**where** where *where* \_\_\_\_\_

**friend** friend *friend* \_\_\_\_\_

**school** school *school* \_\_\_\_\_

**a**  
Add either ? for a questions of ! for an exclamation sentence.

What a great night to look at the stars!

Where have all the stars gone?

**c**  
Which of these words means poorly?

- unwell
- untie
- unhappy

**e**  
List TWO adjectives to describe what you see in this picture.

Answers will vary, accept any reasonable adjectives.

E.g. cold, chilly.

**d**  
Oops Mr Whoops has made TWO punctuation mistakes in his sentence. Can you underline the words that should start with a capital letter?

Next **saturday benji** will be driving a campervan.

**f**  
Practise writing these common exception word spellings.

Optional - check your school's handwriting rules have been followed.

**where** where *where* **where**  
**where** **where** **where** **where**

**friend** friend *friend* **friend**  
**friend** **friend** **friend** **friend**

**school** school *school* **school**  
**school** **school** **school** **school**

**b**  
Make longer words by adding the suffix -est or -er. Write the new word in full on the line.

dark **darkest** or **darker**

kind **kindest** or **kinder**