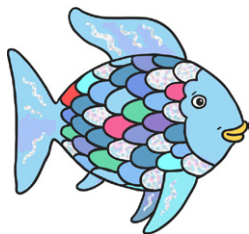


a

Use '?' for a question or '!' for an exclamation sentence. Add the correct punctuation to the sentences below.

What kind of fish is that one

How lovely it is to swim in the sea



c

Which of these words means sad?

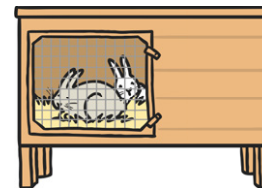
- untrue
- unhappy
- unwell



e

Oops Mr Whoops has made TWO punctuation mistakes in his sentence. Can you underline the words that should start with a capital letter?

priya's pet rabbits were called bob and Bill.



d

List TWO adjectives to describe what you see in this picture.



f

Practise writing these common exception word spellings.

love love *love* \_\_\_\_\_

once once *once* \_\_\_\_\_

house house *house* \_\_\_\_\_

b

Make longer words by adding the suffix -ment or -ness. Write the new word in full on the line.

sad \_\_\_\_\_

enjoy \_\_\_\_\_

**a**

Use '?' for a question or '!' for an exclamation sentence. Add the correct punctuation to the sentences below.

What kind of fish is that one?

How lovely it is to swim in the sea!

**c**

Which of these words means sad?

- untrue
- unhappy
- unwell

**e**

Oops Mr Whoops has made TWO punctuation mistakes in his sentence. Can you underline the words that should start with a capital letter?

priya's pet rabbits were called bob and Bill.

**b**

Make longer words by adding the suffix **-ment** or **-ness**. Write the new word in full on the line.

sad      **sadness**  
enjoy    **enjoyment**

**d**

List TWO adjectives to describe what you see in this picture.

Answers will vary, accept any reasonable adjectives.

E.g. fun, busy.

**f**

Practise writing these common exception word spellings.

Optional - check your school's handwriting rules have been followed.

love love *love* love love love love

once once *once* once once once

house house *house* house  
house house house house